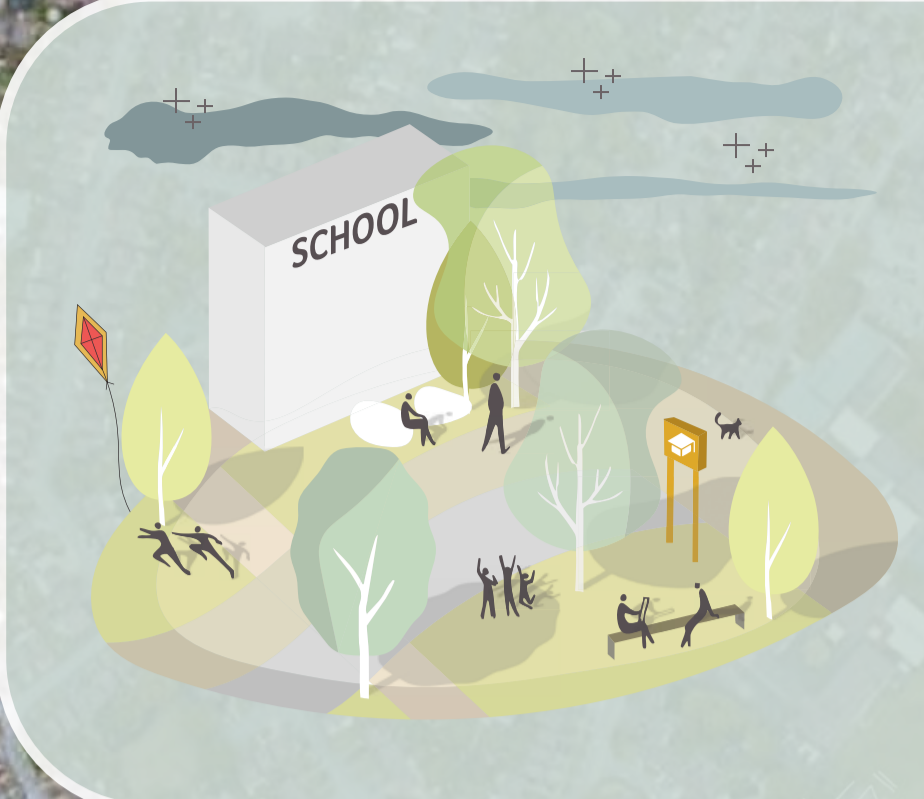




### Quality New Homes For All

Development will provide a range of **modern and sustainable new homes**.

The development will provide **50% affordable housing** for local people who are struggling with affordability.



### Sustainable Growth in Wythall

Wythall is a **sustainable location** for growth benefiting from an array of services and facilities including schools, shops, pubs, and is in close proximity to **Wythall train station** which provides fast connections to Birmingham, Worcester, London, and other locations in the region.

Wythall is located with **close proximity to Birmingham** and is therefore an excellent location to accommodate unmet housing need.



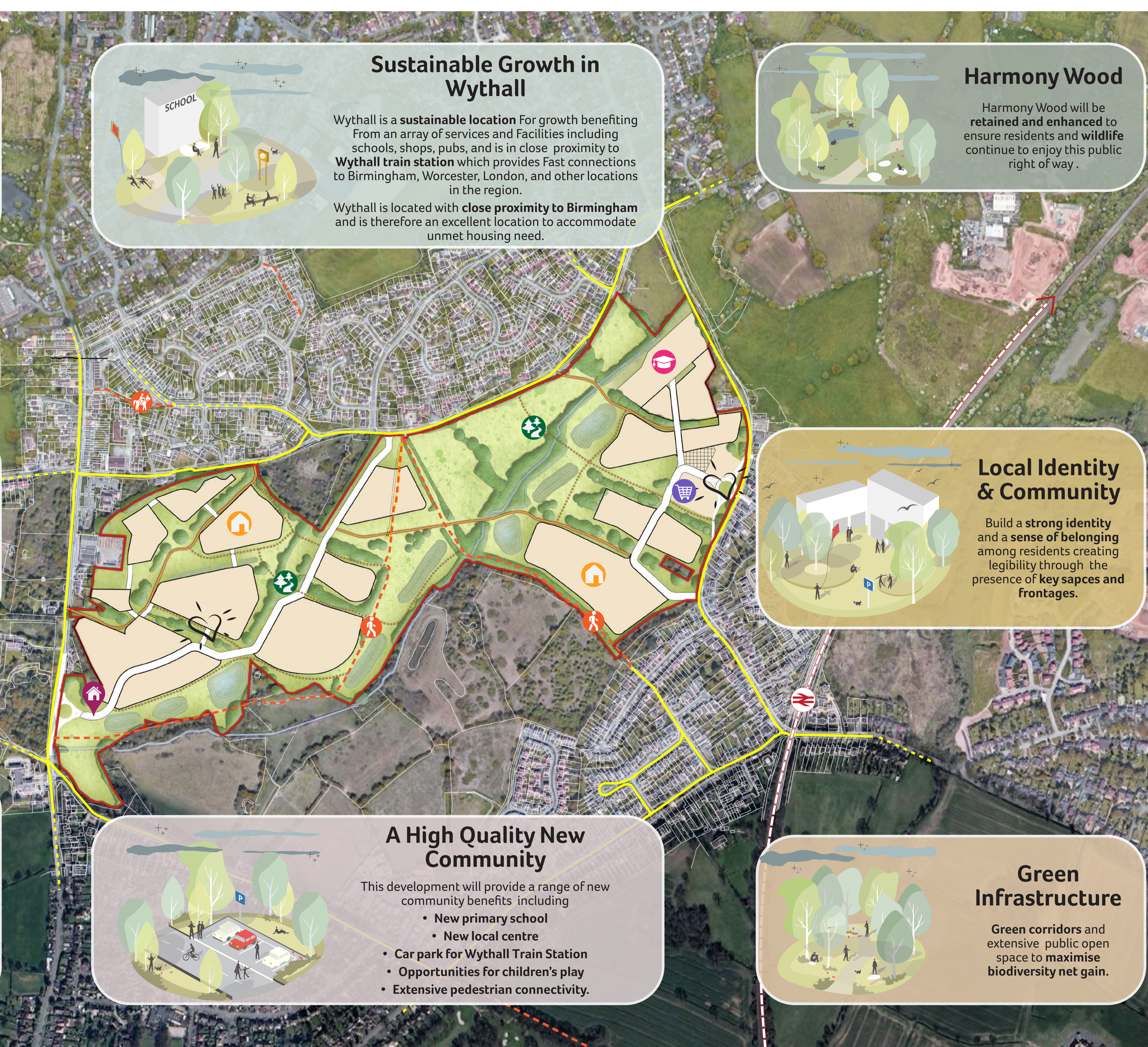
### Harmony Wood

Harmony Wood will be **retained and enhanced** to ensure residents and **wildlife** continue to enjoy this public right of way.



### Bellway is a 5-star housebuilder

committed to delivering **attractive developments** that create **high quality, sustainable new communities**.




### Local Identity & Community

Build a **strong identity** and a **sense of belonging** among residents creating legibility through the presence of **key spaces and frontages**.



### A New Network of Open Space

Flexible development options will provide the opportunity to deliver **comprehensive and high quality development** that maximises opportunities for **pedestrian connectivity, public open space**, and will create an **integrated** new community with benefits that can be enjoyed for the long term.



### A High Quality New Community

This development will provide a range of new community benefits including

- **New primary school**
- **New local centre**
- **Car park for Wythall Train Station**
- **Opportunities for children's play**
- **Extensive pedestrian connectivity.**



### Green Infrastructure

**Green corridors** and extensive public open space to **maximise biodiversity net gain**.